

# Manual

## Advanced Editing Widget

### Overview

**Power and precision for professional editing in ArcGIS Experience Builder.**

Optimize your spatial data management with a tool designed for efficiency. The Advanced Editing widget allows you to edit feature layers in ArcGIS Enterprise and Online, integrating advanced capabilities that go beyond standard tools:

- **Intelligent Automation:** Custom automatic validations and calculations using ArcGIS Arcade expressions.
- **Mass Productivity:** Batch editing for simultaneous updates of multiple records.
- **Infrastructure Control:** Basic integration with Utility Network rules to maintain the integrity of your networks.

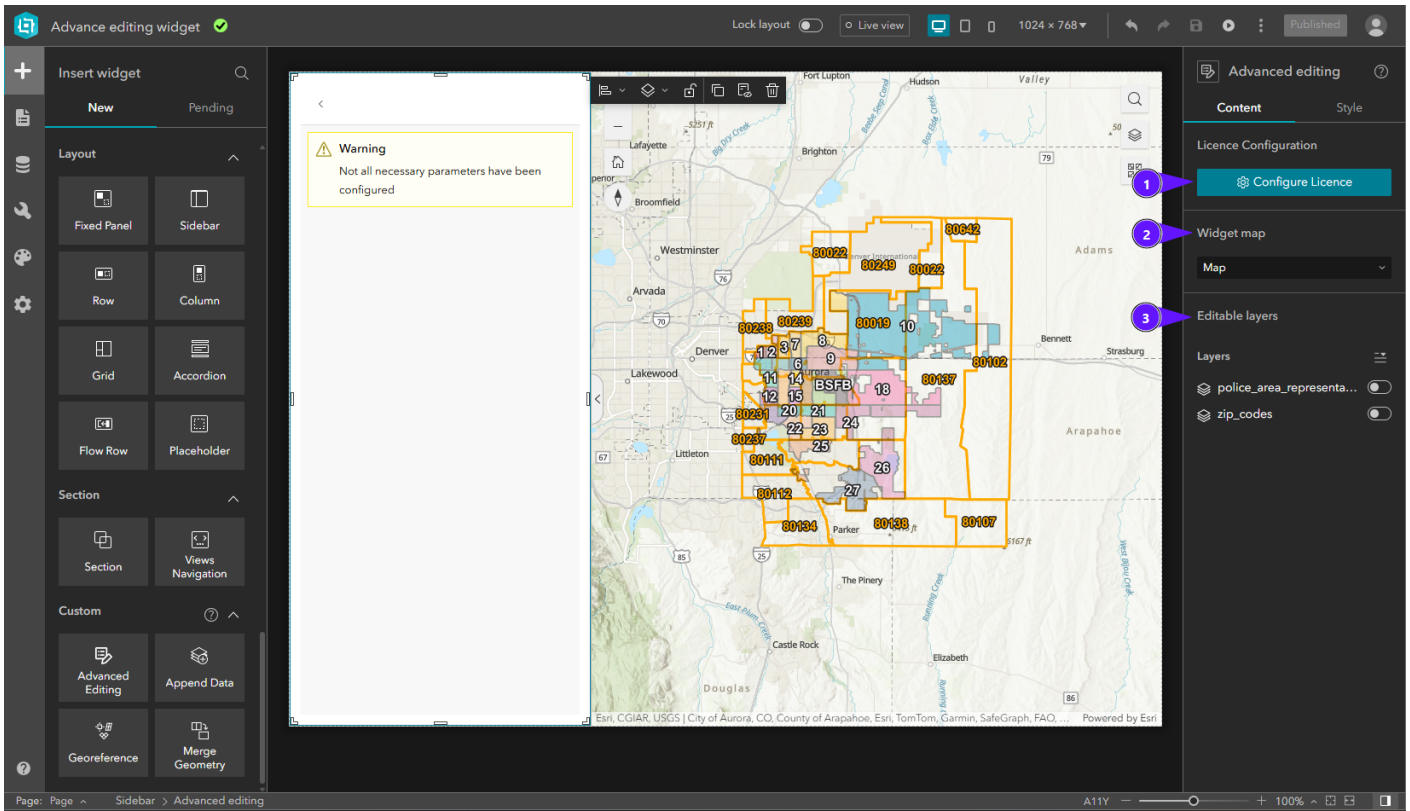
### Getting Started

#### Installation

To install an Experience Builder widget, follow the instructions at:  
<https://enterprise.arcgis.com/en/portal/10.5/use/add-custom-widgets.htm>

#### Configuration

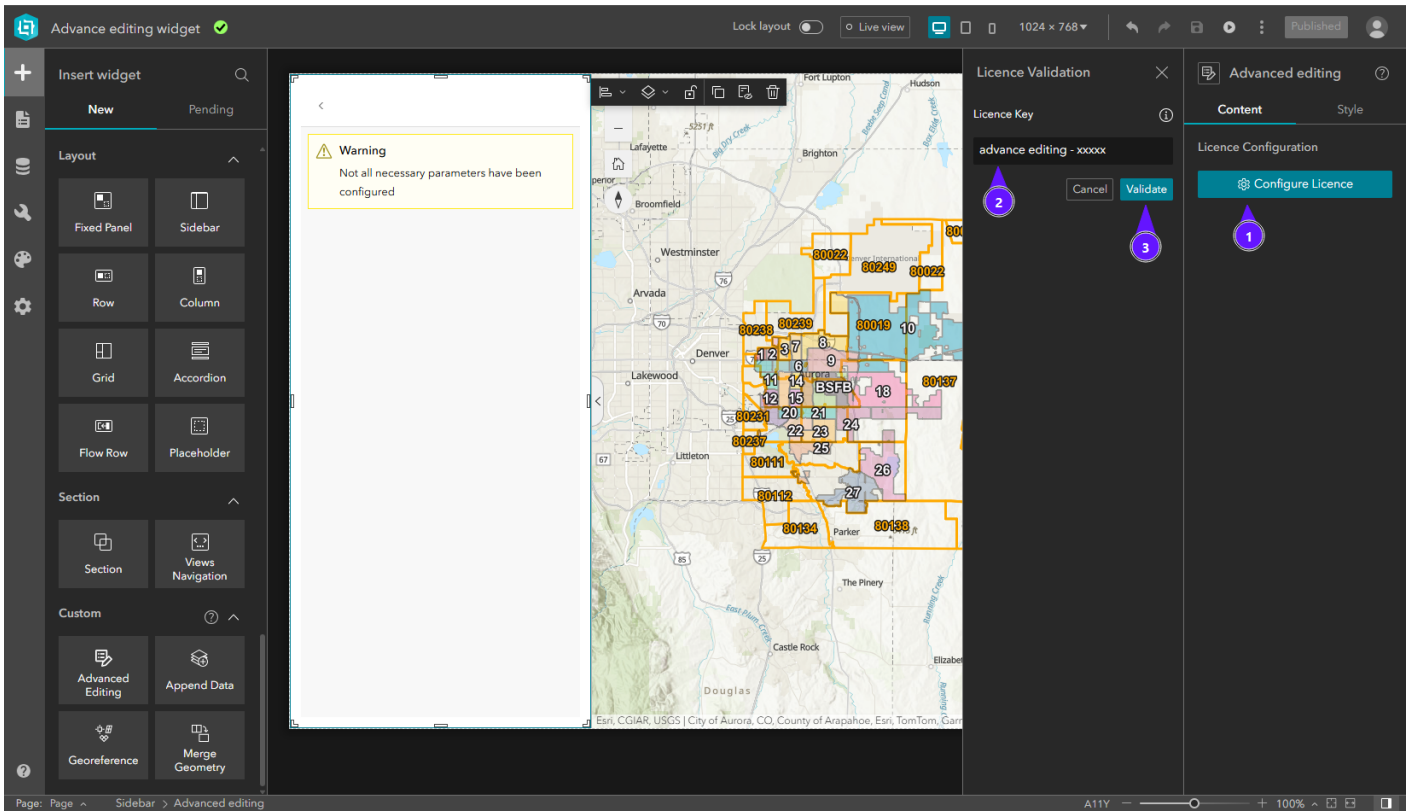
The configuration panel has three sections:



1. License Configuration
2. Map settings
3. Layers settings

# License Configuration

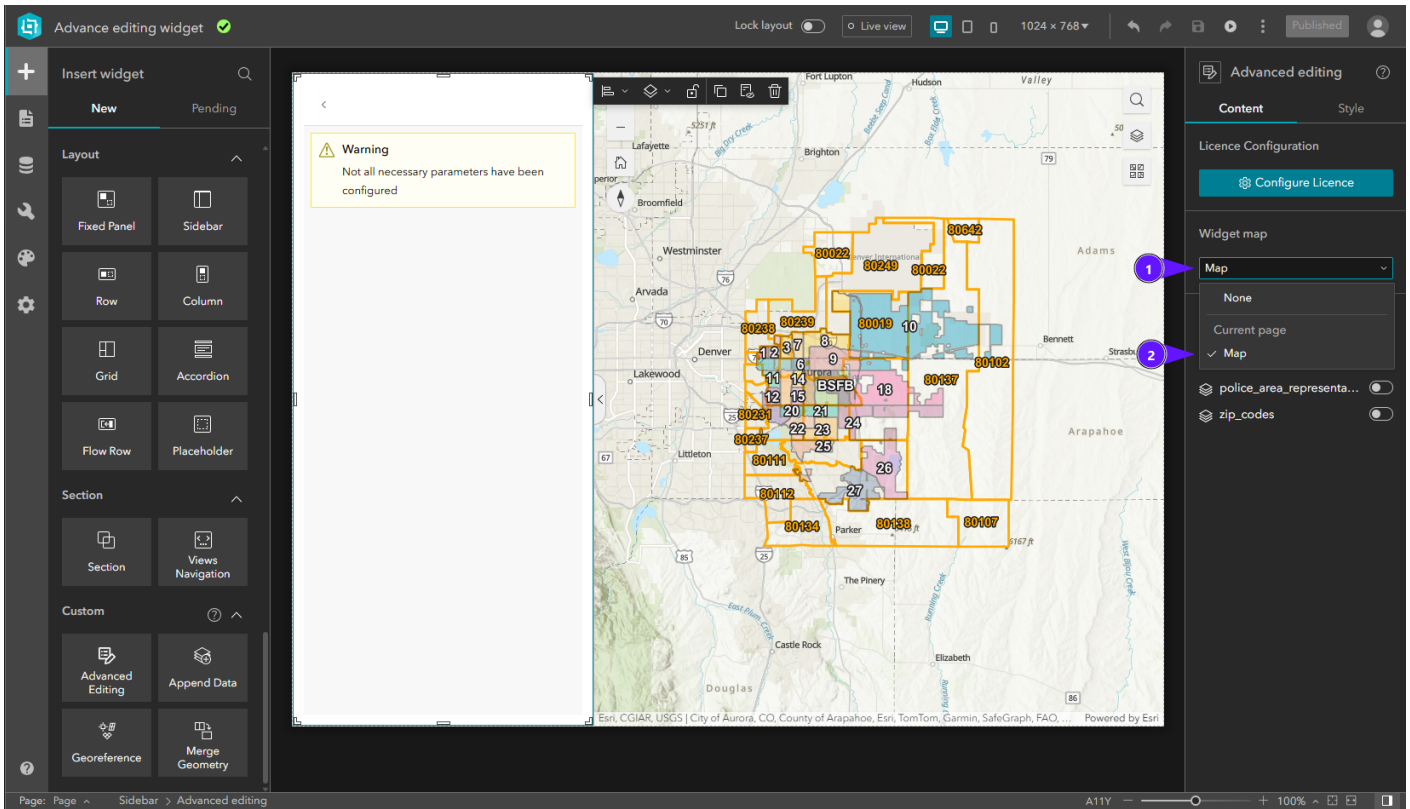
To activate the widget license:



1. In the right panel, click **Configure Licence**.
2. Enter your license key in the input field.
3. Click **Validate**.

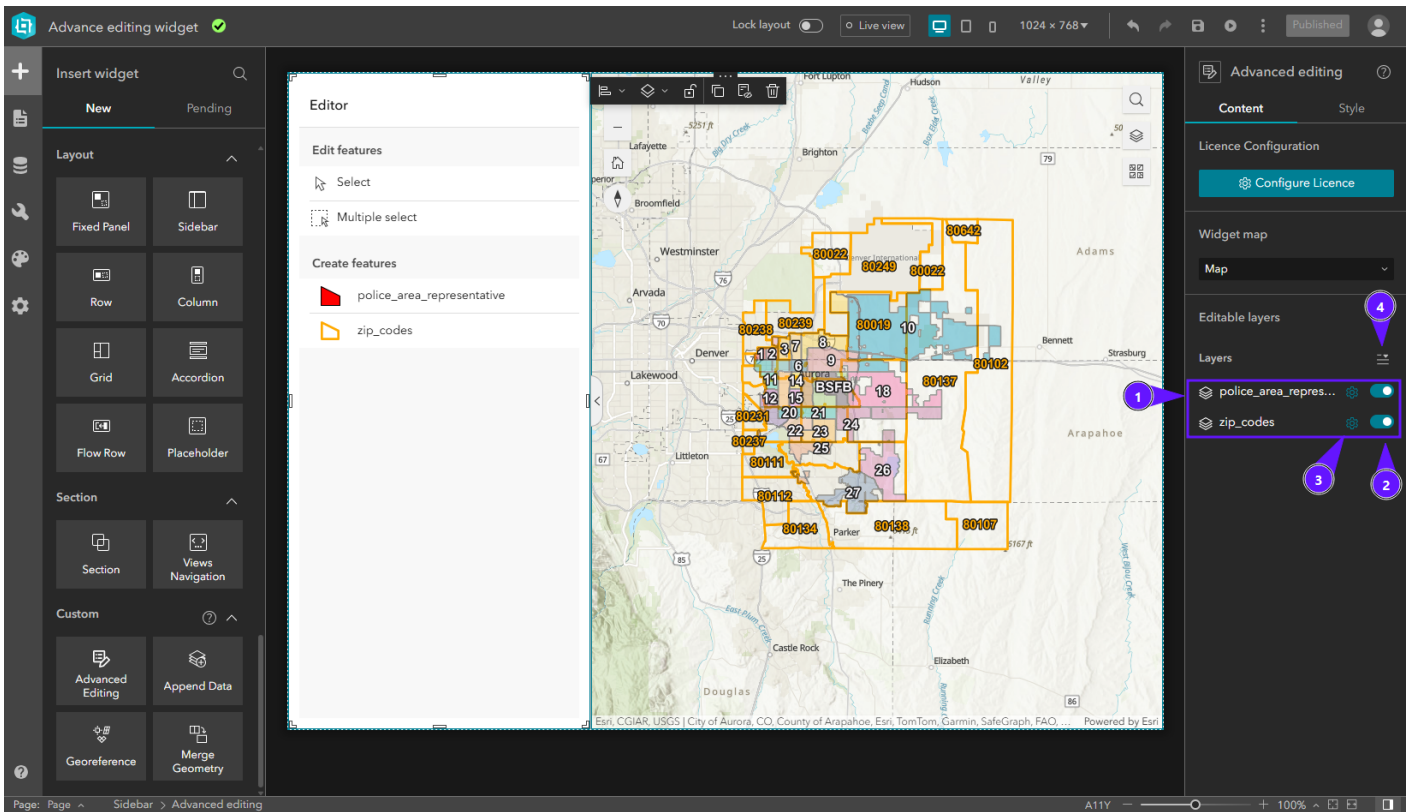
Once validated, the widget is fully functional.

## Select Map Widget



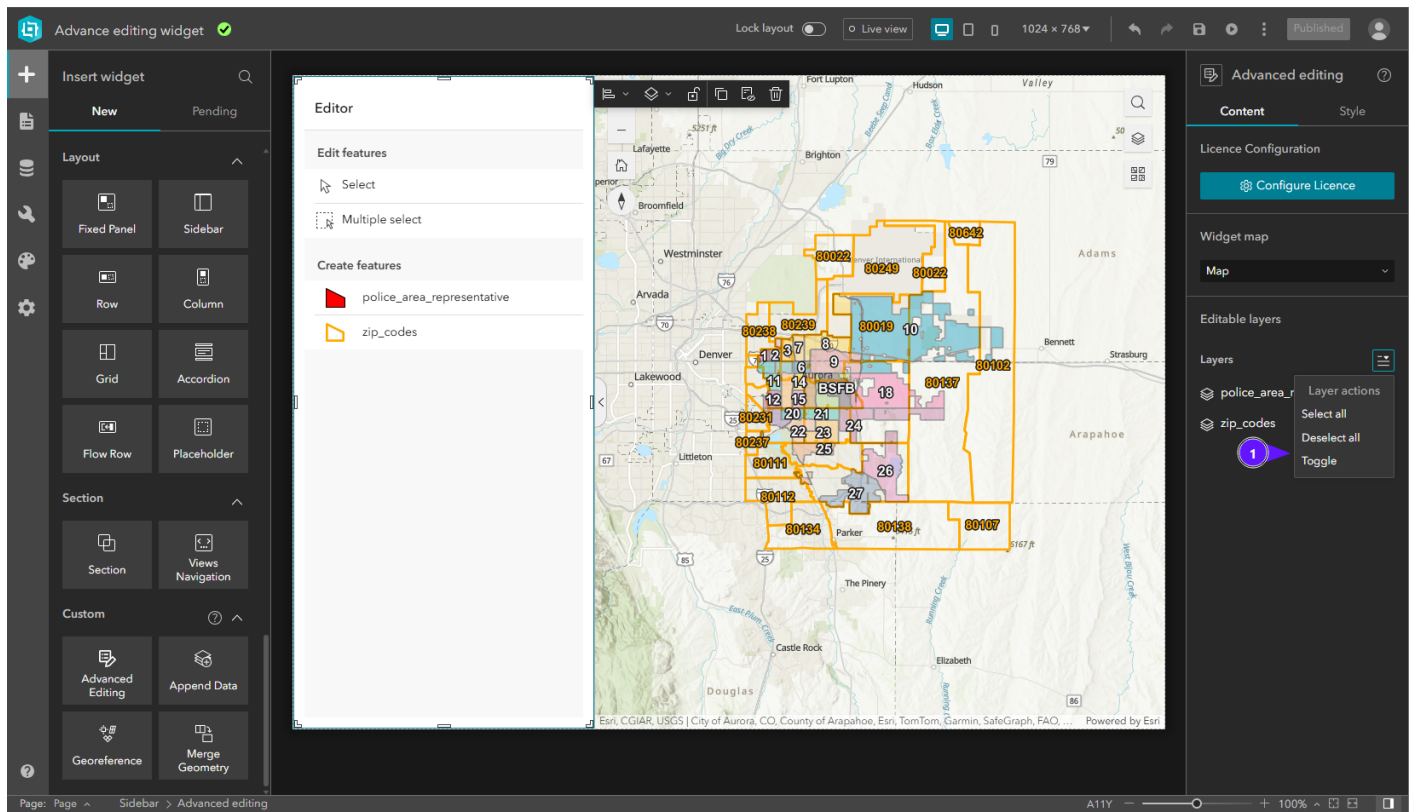
In **Select Map Widget**, open the dropdown (1) and choose the map (2) to use with this widget.

## Select Layers



In **Select Layers**, the layer list (1) lists layers available in the published app. Enable or disable layers (2) for editing operations. Configure the layer (3) with its fields, validations, and calculations.

Use the quick-select tool (4) to select layers faster.



## Revision #1

Created 2026-04-02 01:53:00 UTC by Giovanni Badillo

Updated 2026-04-02 01:59:29 UTC by Giovanni Badillo