

# Manual

## Merge Geometry Widget

### Overview

This widget merges geometries and edits feature attribute properties within ArcGIS Experience Builder.

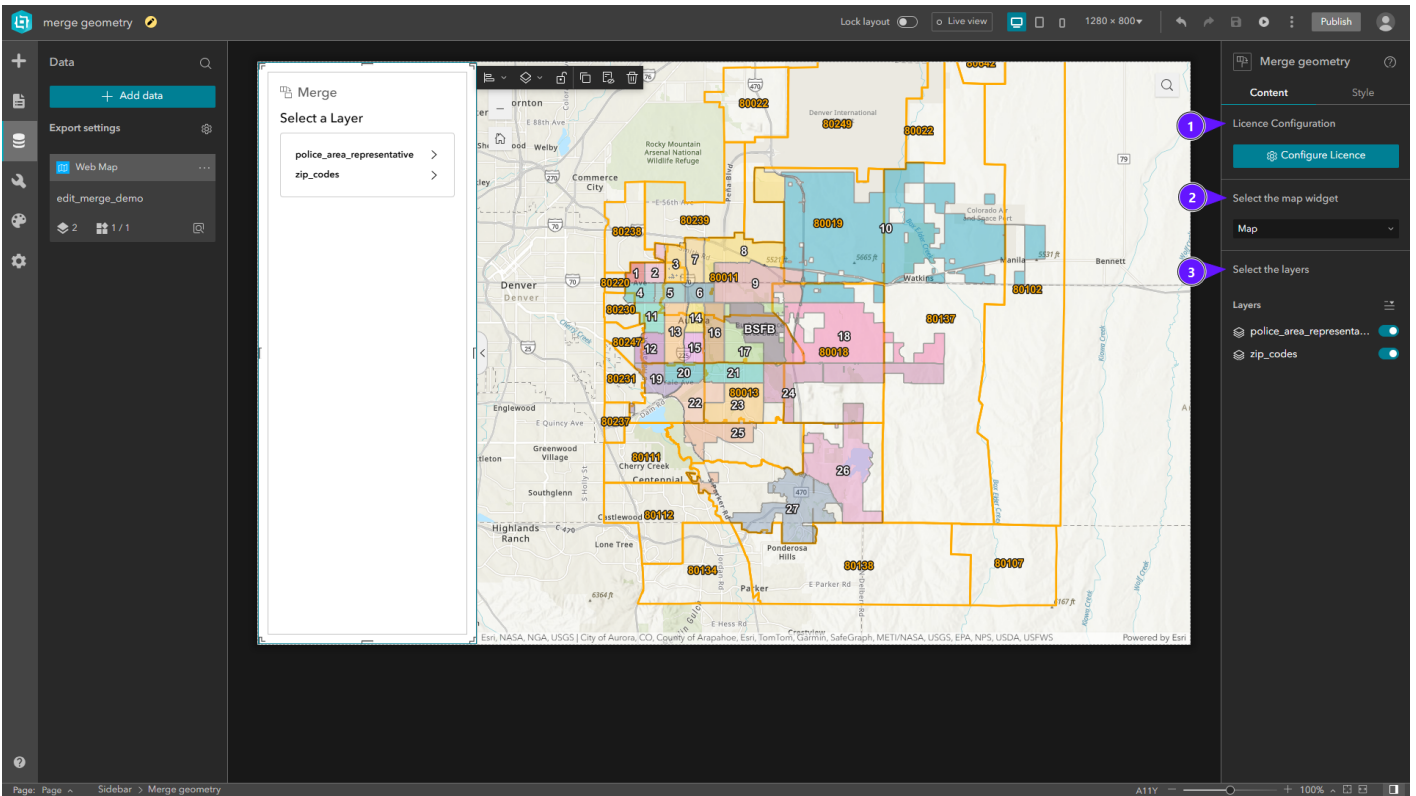
### Getting Started

#### Installation

Select the widget in the Experience Builder canvas to open the configuration panel on the right.

#### Configuration

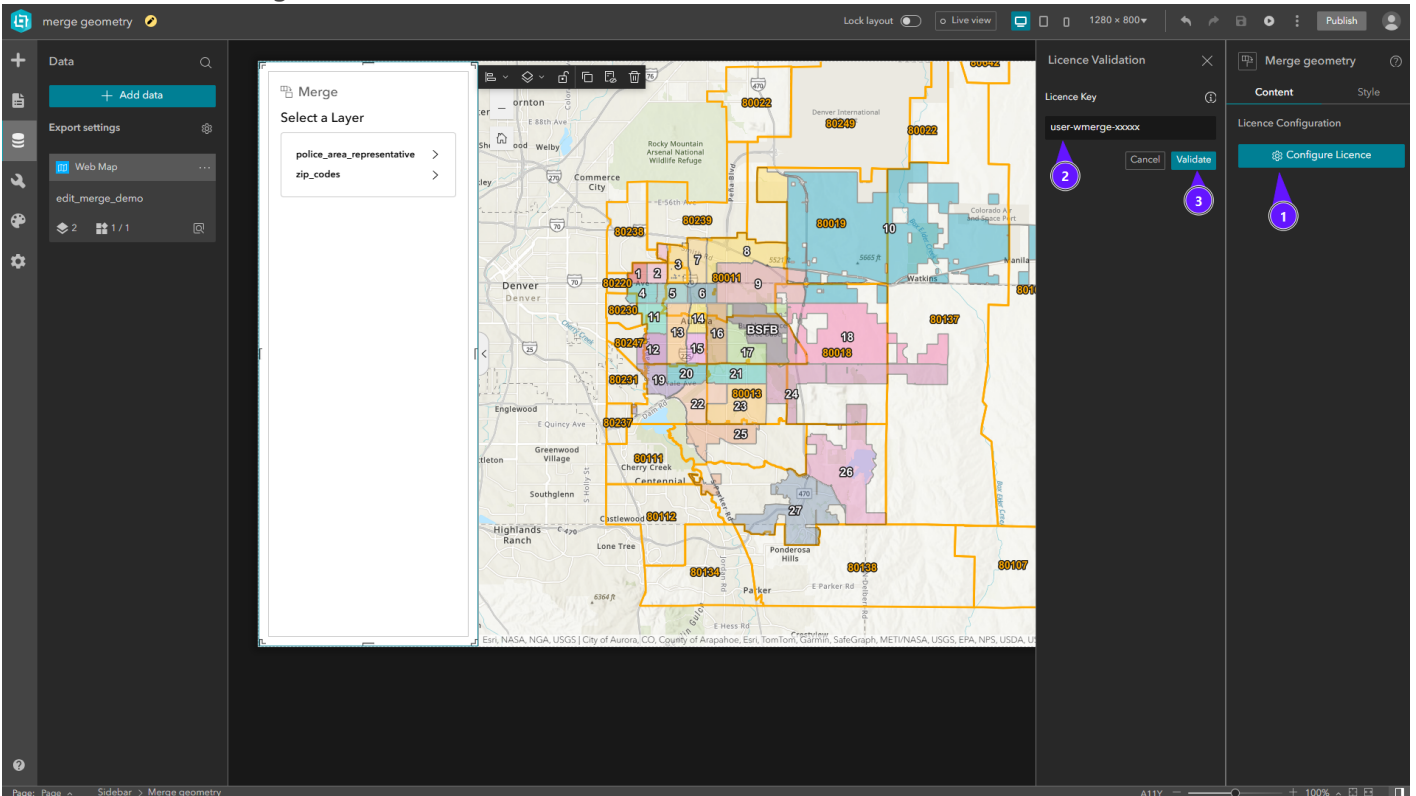
The configuration panel has three sections:



1. License Configuration
2. Map settings
3. Layers settings

# License Configuration

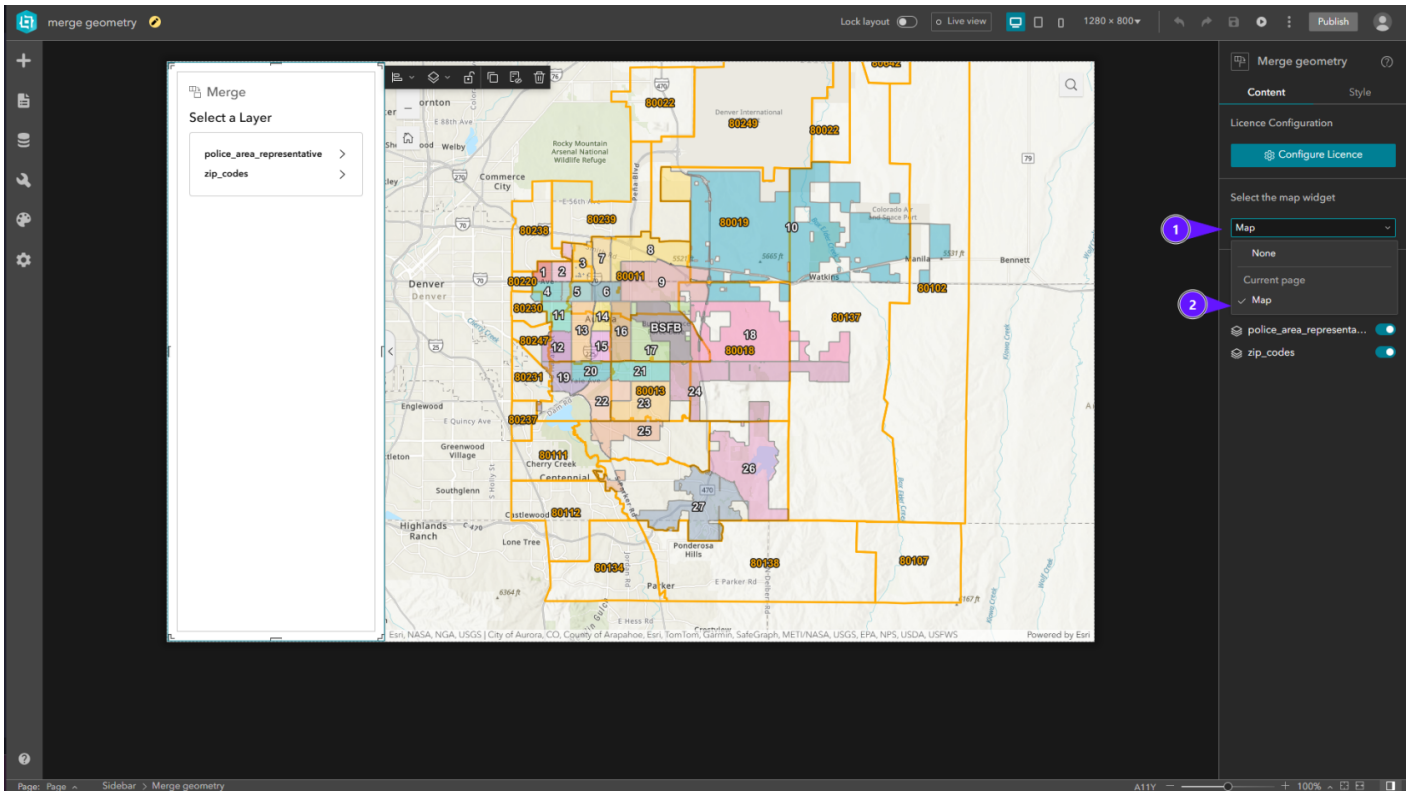
To activate the widget license:



1. In the right panel, click **Configure Licence**.
2. Enter your license key in the input field.
3. Click **Validate**.

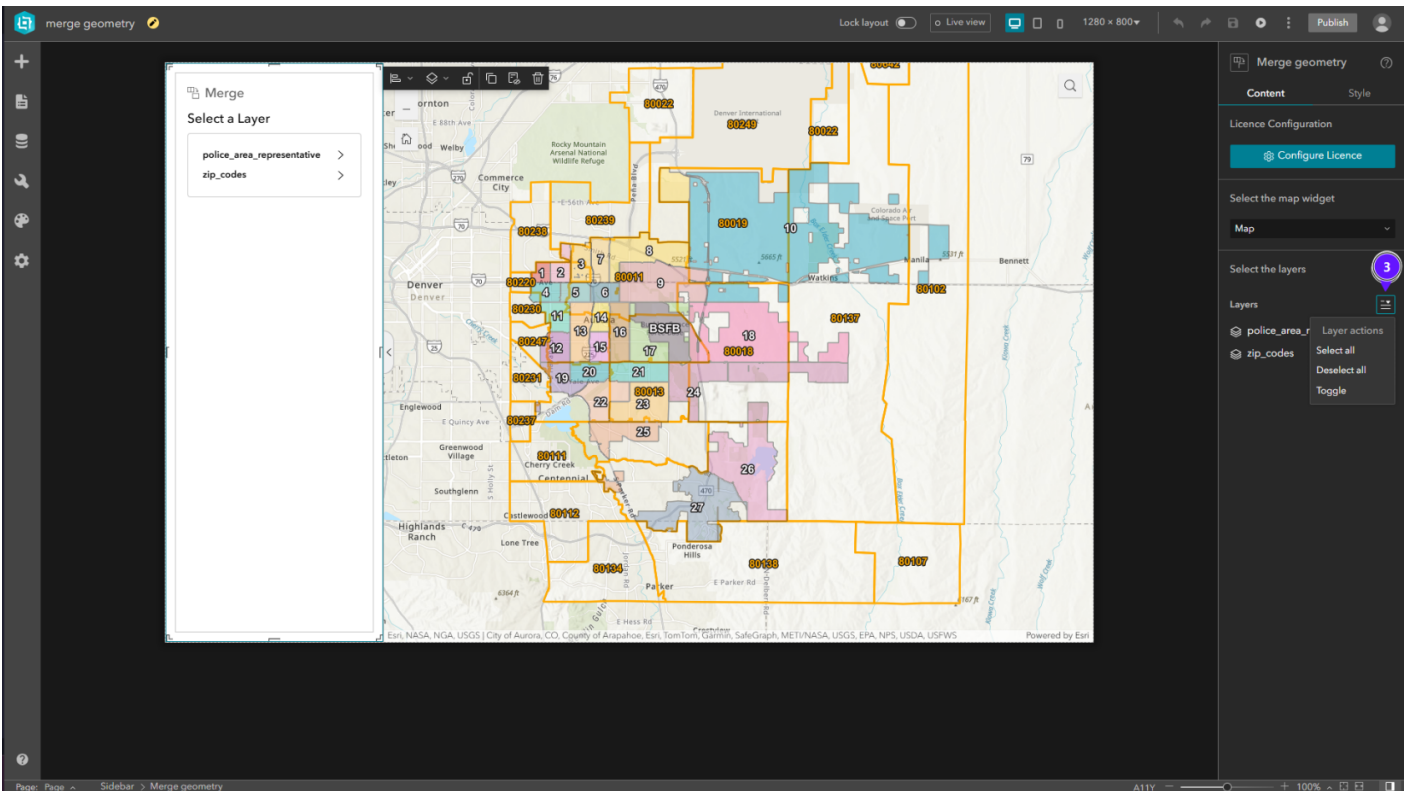
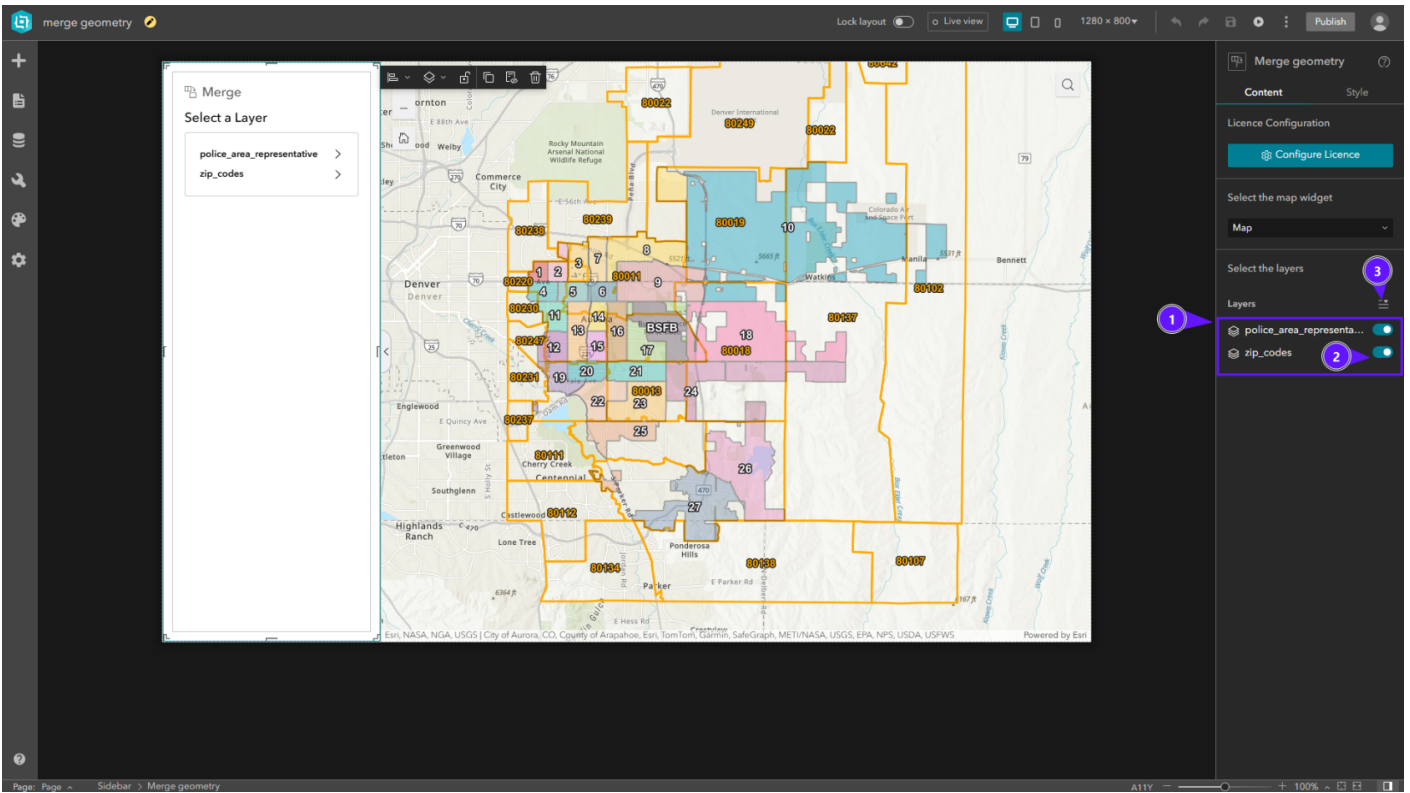
Once validated, the widget is fully functional.

## Select Map Widget



In **Select Map Widget**, open the dropdown (1) and choose the map (2) to use with this widget.

## Select Layers

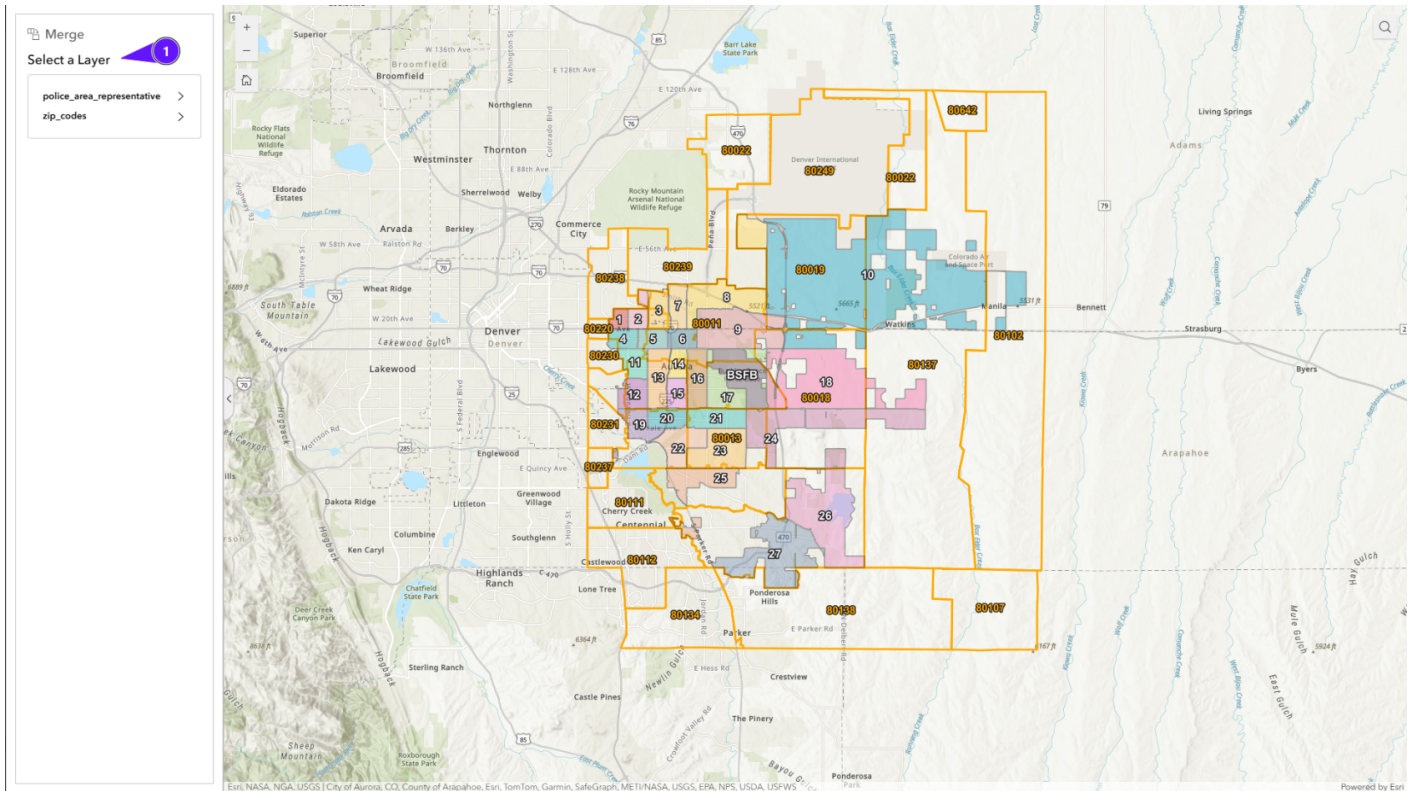


In **Select Layers**, the layer list (1) lists layers available in the published app. Enable or disable layers (3) for merge operations. Use the quick-select tool (3) to select layers faster.

# Usage

# Layer Selection Screen

The first screen shows the layer selection. Only layers configured in the Configuration section are listed.

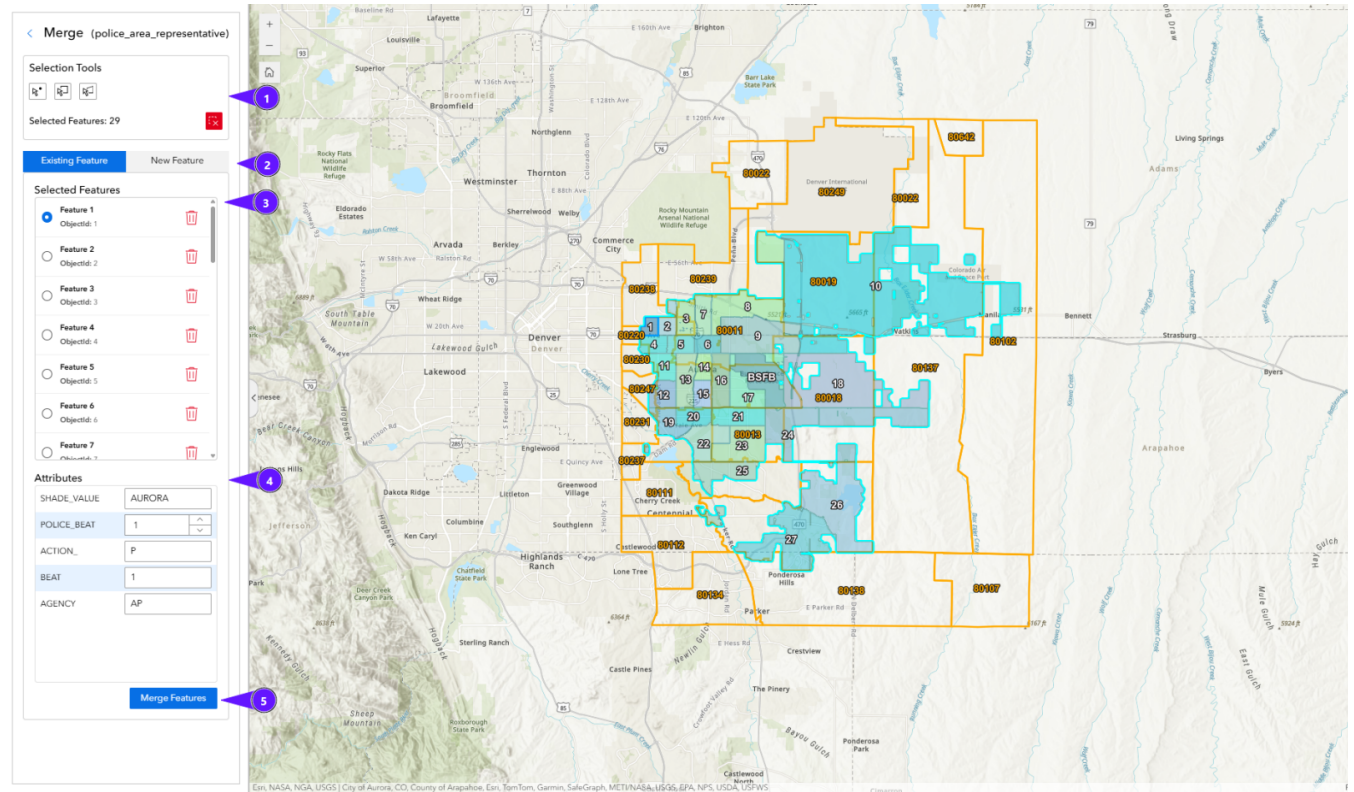


# Operations Screen

After selecting a layer, the operations screen shows:

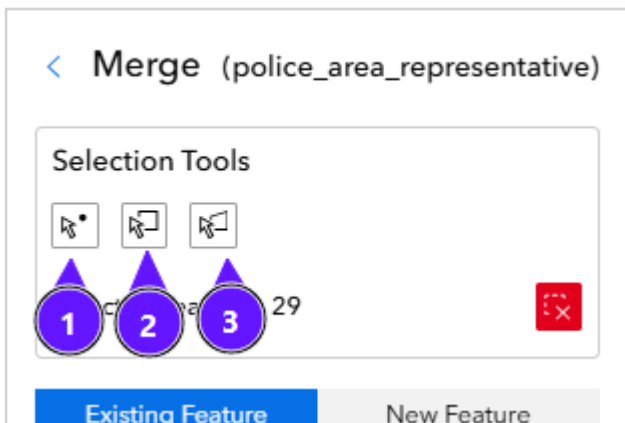
- **Selection tools** (1)
- **Operation type** (2)
- **Selected features list** (3)

• Attribute edit form (4)



# Selection Tools

Three selection tools are available:



Tool	Description
(1)	Point
(2)	Rectangle
(3)	Polygon

“ • Hold **Shift** to add features to the selection.

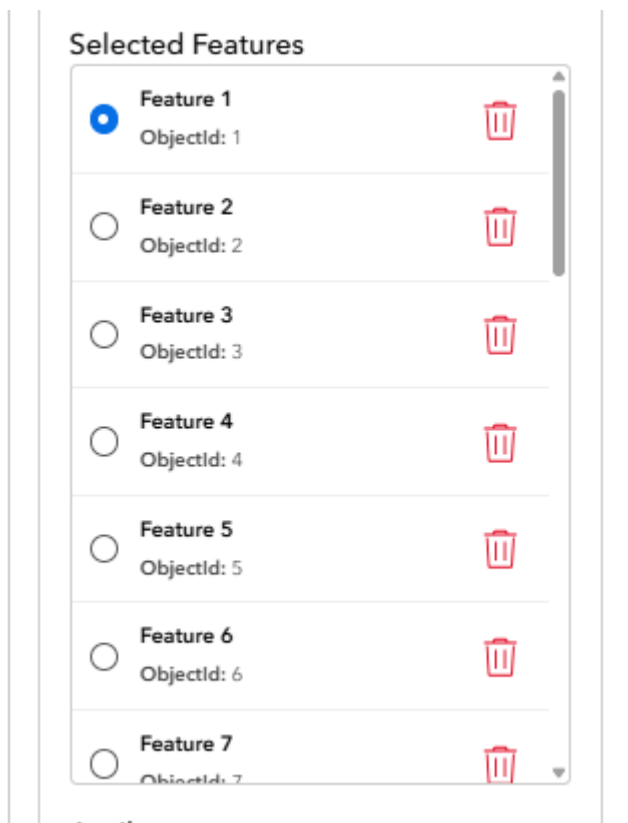
- Hold **Ctrl** to remove features from the selection.
- The red button clears all selected features.

## Operation Type



Operation	Description
<b>Existing Feature</b>	Merges selected features and appends the result to a previously selected feature.
<b>New Feature</b>	Creates a new feature from the merged geometry.

## Selected Features



This section lists features selected with the selection tools. You can:

- Remove individual features.
- For **Existing Feature**, choose the target feature that will receive the merged geometry and updated attributes.

Revision #9

Created 2026-03-29 16:55:47 UTC by Admin

Updated 2026-03-30 05:54:10 UTC by Giovanni Badillo